



Growing Knowledge®

Corn ALERT



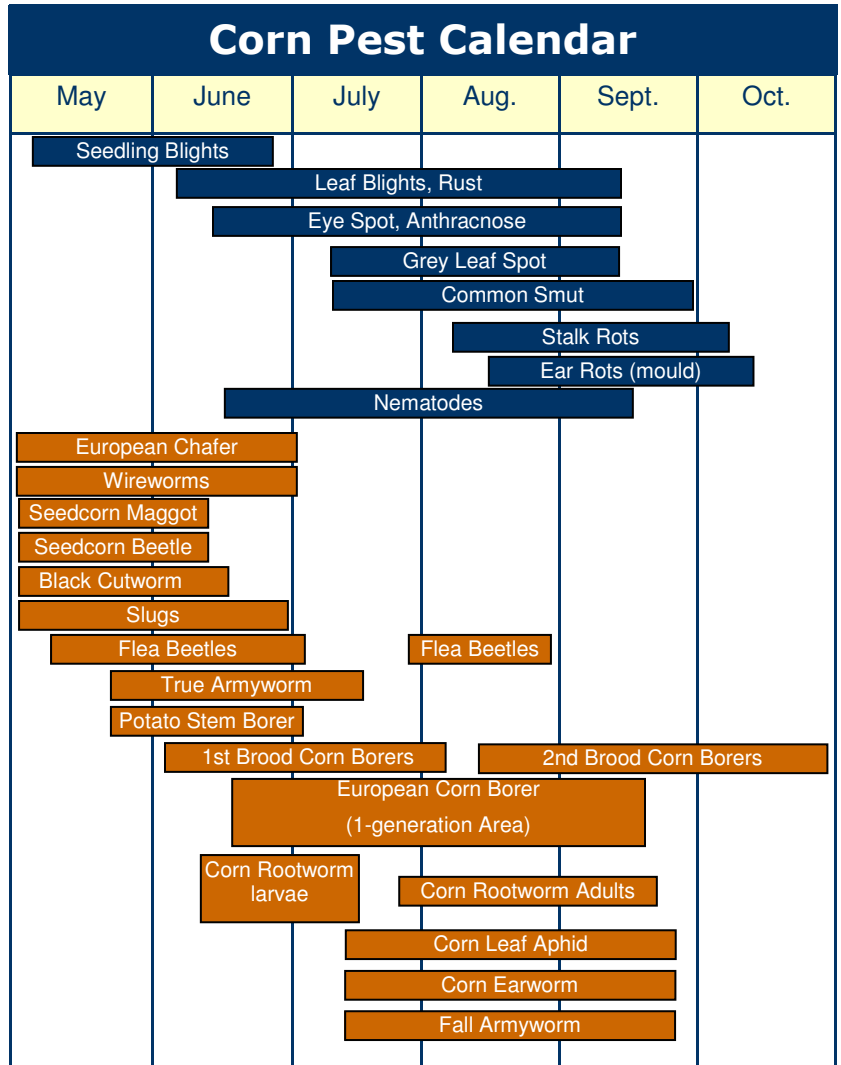
Scouting for Corn Pests

Scouting your corn crops for diseases and insects is something that should be done every year. Knowing where and when to look for corn pests is critical. The corn pest calendar (pictured to the right) helps to identify the months when the most damaging pests are active in Canada. While these are serious corn pests, the following products can help protect your corn acres.

A few common fungicides to help combat these diseases are Apron XL LS® seed treatment, Apron XL LS®, and Maxim XL®. Apron XL LS seed treatment provides systemic protection against *Pythium* damping-off, early season *Phytophthora* root rot and downy mildew. Apron XL LS also provides protection against *Pythium* and *Phytophthora*, but is only registered for commercial seed treatment. Maxim XL provides long-lasting protection against *Pythium*, *Rhizoctonia*, *Fusarium* and can provide protection against *Aspergillus* and *Penicillium*.

Some common insecticides to help combat these insects are Poncho® and Lorsban®. Applying Poncho 250 will help protect against seedcorn maggots, black cutworms, corn flea beetles, wireworms and white grubs up to the five-leaf stage. Poncho 1250 provides control of heavier infestations of these insects past the five-leaf stage and control of corn rootworm. Lorsban can control corn rootworm larvae. YieldGard insect protection traits are an effective way to control corn rootworm and corn borer.

Insects and diseases can damage a corn crop. Scouting fields often for these pests is critical to the success of a corn crop. Contact your local DEKALB® Representative for more information about products to help control pest damage.



Source: Field Crop Protection Guide, 2006 Edition, Ontario Ministry of Agriculture, Food & Rural Affairs. Publication 812.

Corn pest calendar was adapted from Ontario Ministry of Agriculture, Food & Rural Affairs' Corn: Scouting Calendar. Last Reviewed 27 October 2005.

Always read and follow pesticide label directions. Individual results may vary, and performance may vary from location to location and from year to year. This result may not be an indicator of results you may obtain as local growing, soil and weather conditions may vary. Growers should evaluate data from multiple locations and years whenever possible. Growing Knowledge® and Design, Monsanto imagine®, the vine symbol, and YieldGard® are trademarks of Monsanto Technology LLC. ©2007 Monsanto Company. Maxim XL® and Apron XL® are registered trademarks of Syngenta. Poncho® is a registered trademark of Bayer AG. All other trademarks are the property of their respective owners. ©2007 Monsanto Company.



Avant d'ouvrir un sac de semence, lisez et familiarisez-vous avec les pratiques d'utilisation responsable, **incluant les règles de création d'un refuge pour la gestion de la résistance des insectes**, des caractères biotechnologiques exprimés dans la semence, tel que stipulé dans le Contrat d'utilisation de technologie de Monsanto que vous signez. En ouvrant le sac et en utilisant la semence qu'il contient, vous acceptez de vous conformer à ces principes d'utilisation responsable.

A publication of

MONSANTO
imagine®

